





*modular building system*

STATION

5



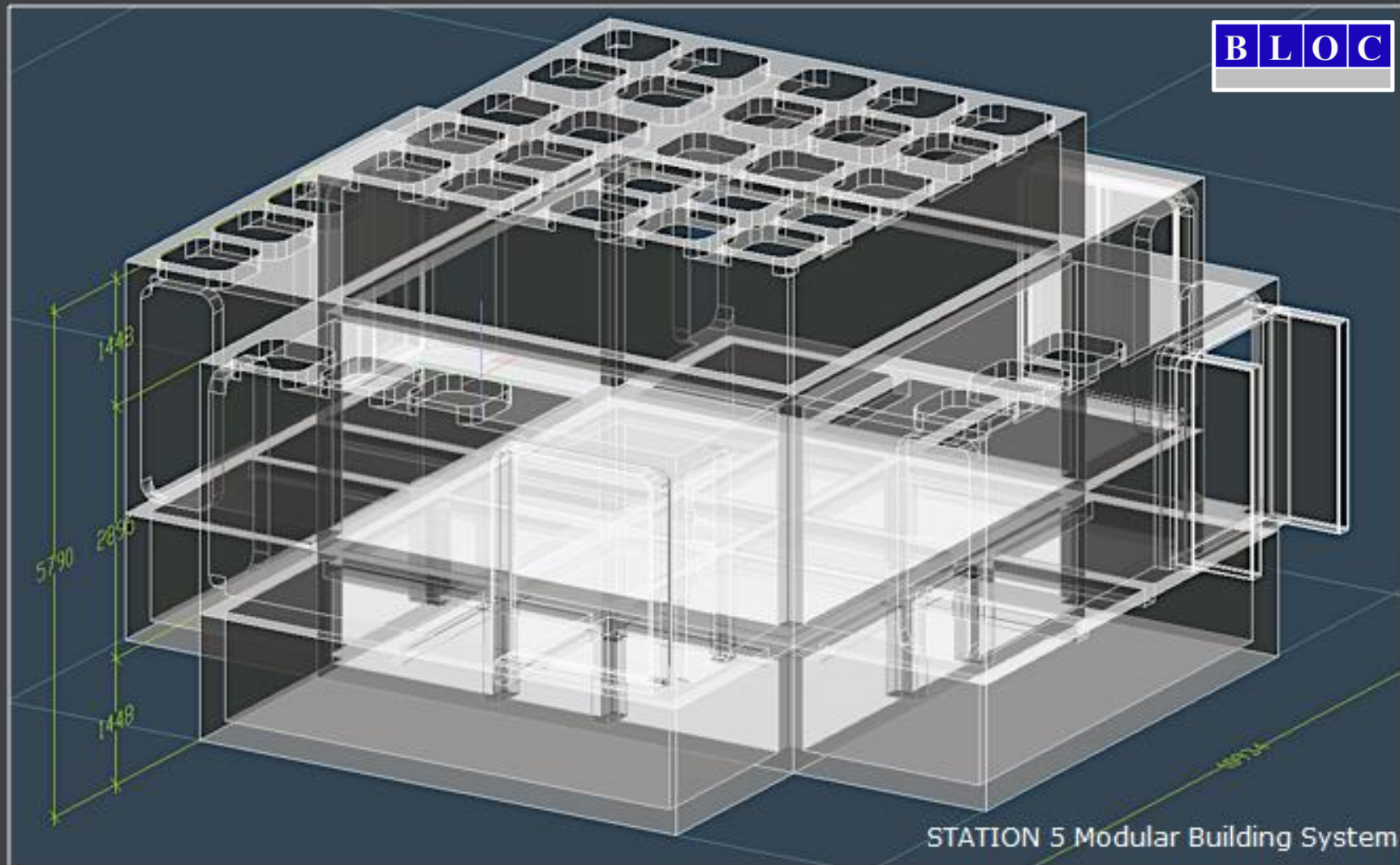
B L O C

*modular building system*

STATION

5

B L O C



STATION 5 Modular Building System

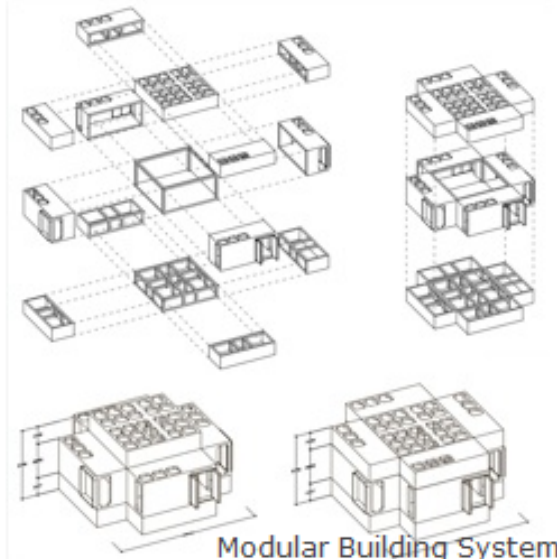
The **Modular Units** have a lot of innovations for the **worldwide** operation, in **all climatic zones**, especially for areas without or less infrastructure based on a unique, modular, very **flexible**, **combinable** and **robust construction** principle. **STATION 5** units are barrier free, optional bullet proof, build up in a so called semi permanent construction construed for a long lasting operation, but **movable** within a short time.

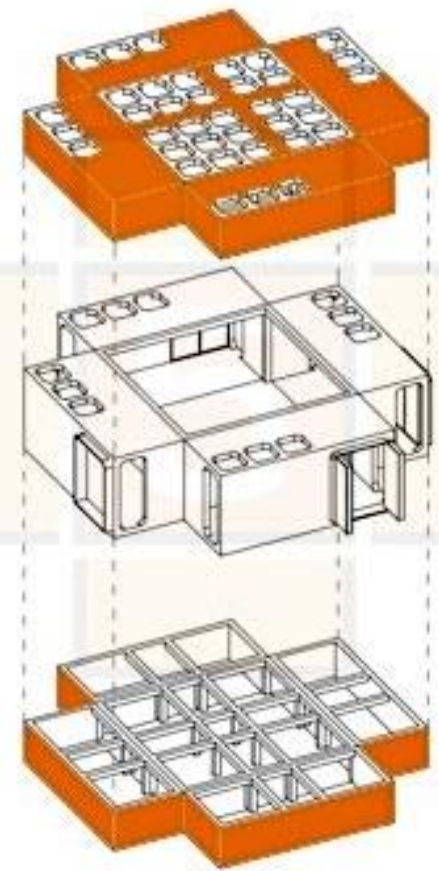
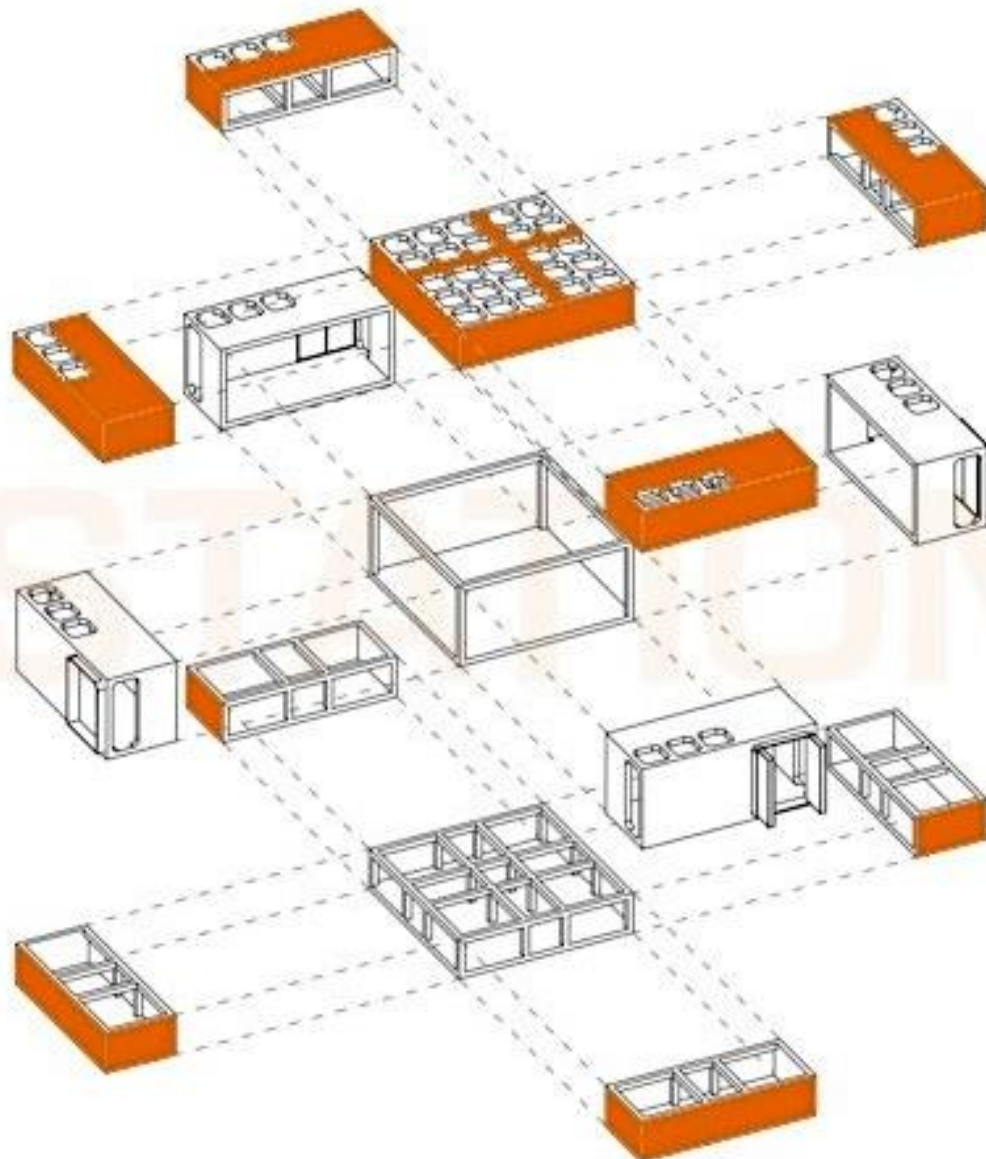
The above mentioned types of Modular Functional Units are **combinable** with each other up to the creation of infrastructures. **STATION 5** supports the idea of using regenerative energy to protect the environment and to save costs. Therefore **STATION 5** uses the standardized transport modus for their products. The prefabricated elements of the units guarantee a **fast and easy setup** on location.

The **modular functional units** of **STATION 5** are flexible in any way.

All our products are customized. The **STATION 5** products can be **adapted** to the existing needs of the customer and of the location of the units.

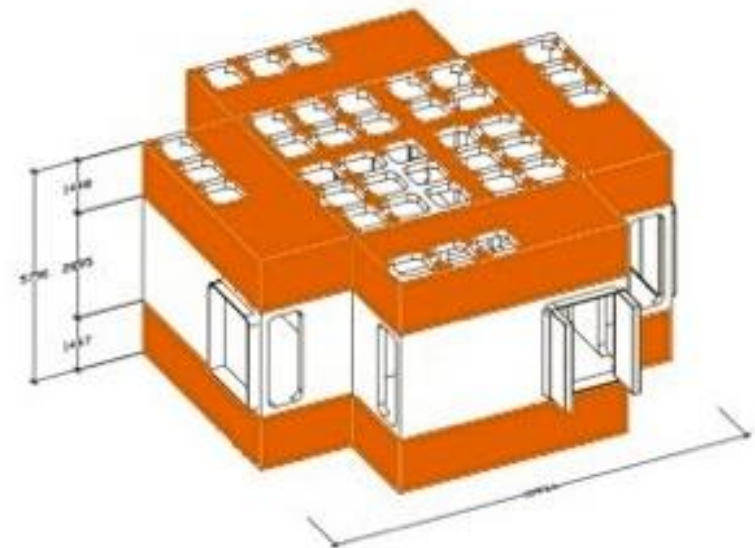
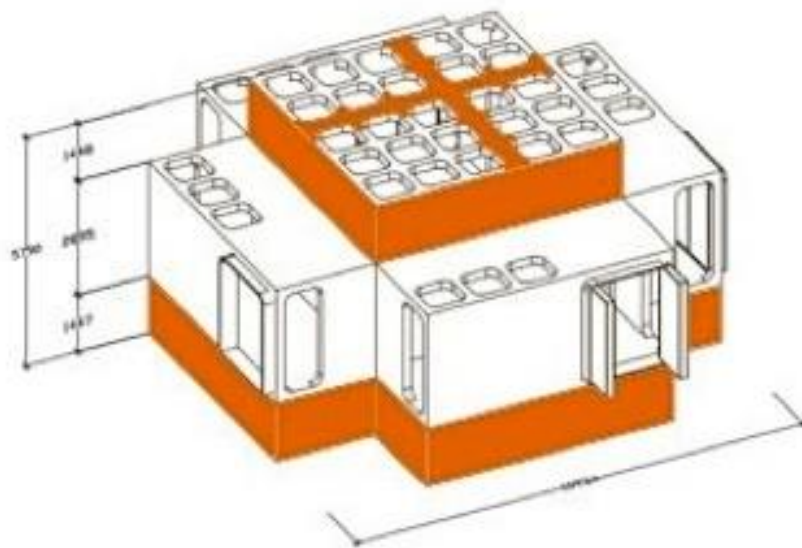
The **functional modular units** are based on the same construction principle shown below and are available in different types of quality depending on the **needs of the customer** and the field of application.



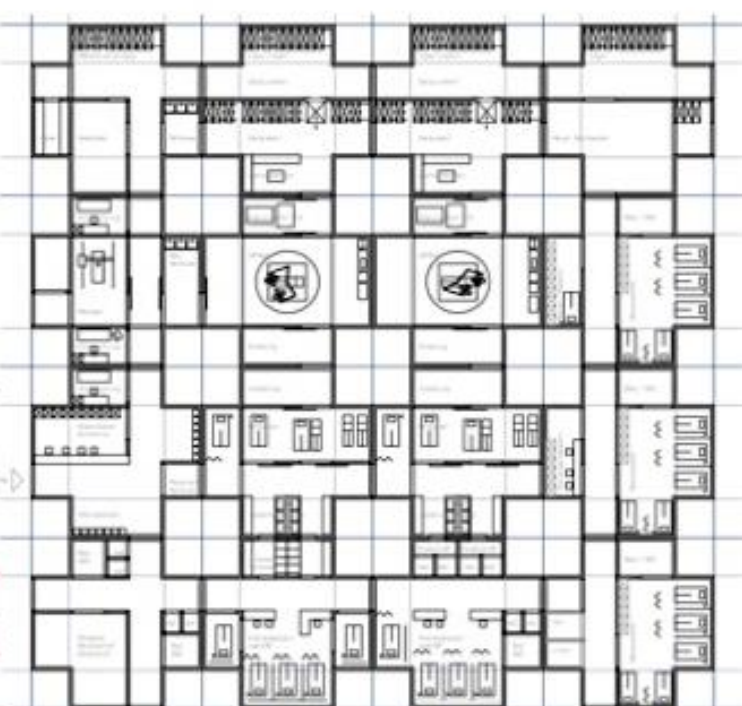
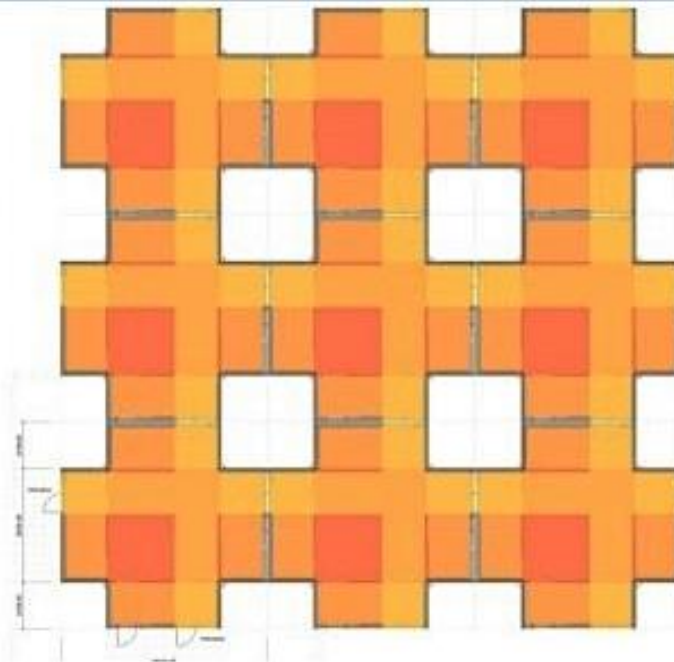


STATION 5 Modular Building System





STATION 5 Modular Building System



BLOC



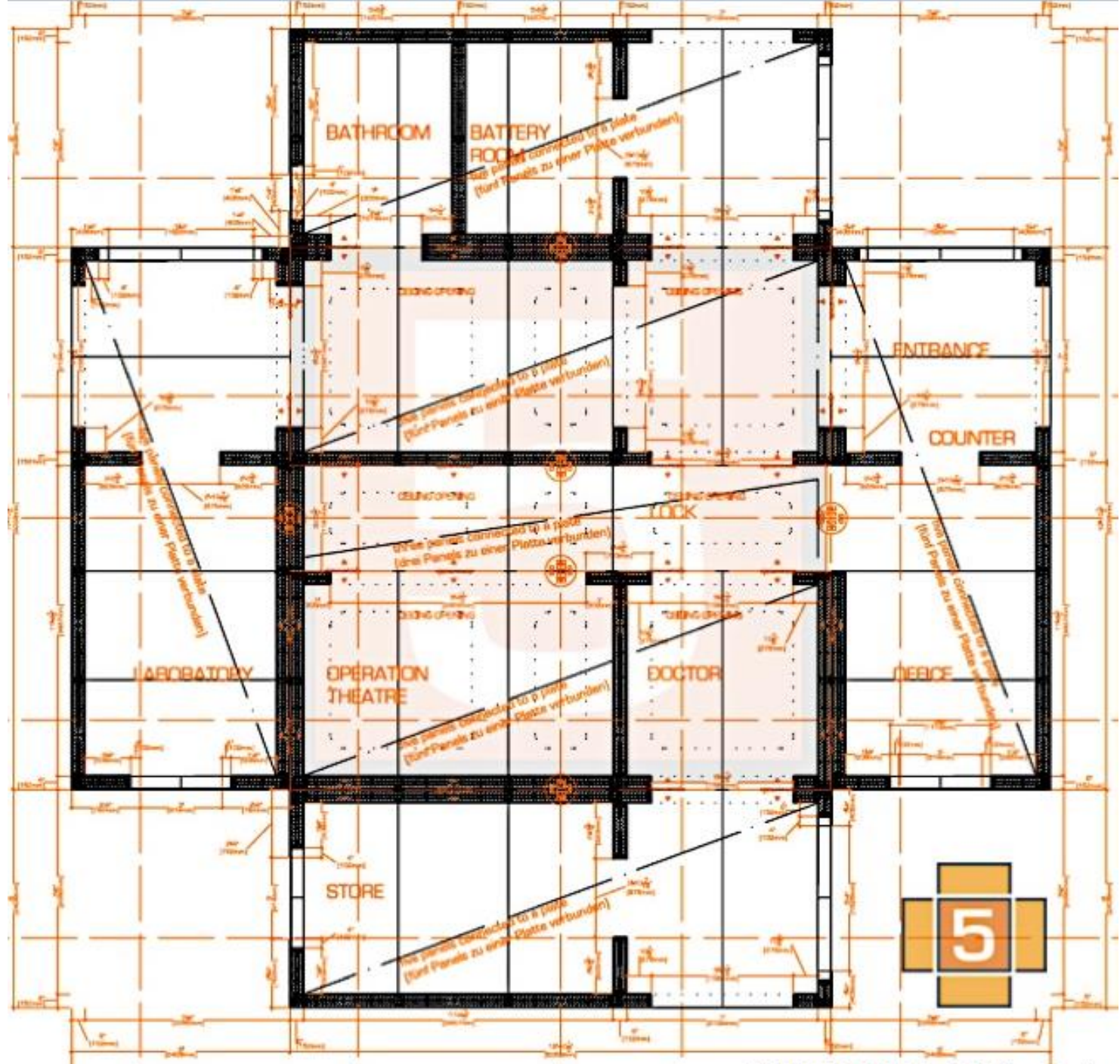


STATION 5 Detached House, Floor Plan



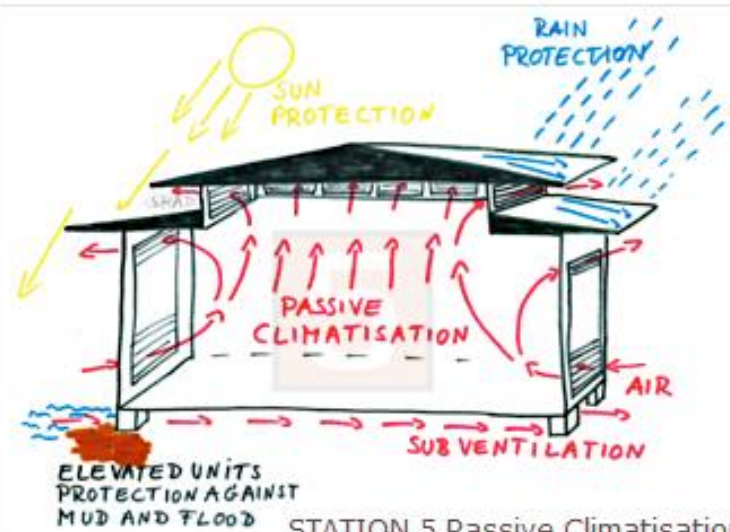
floor plan

STATION 5 Modular Building System, Detached House





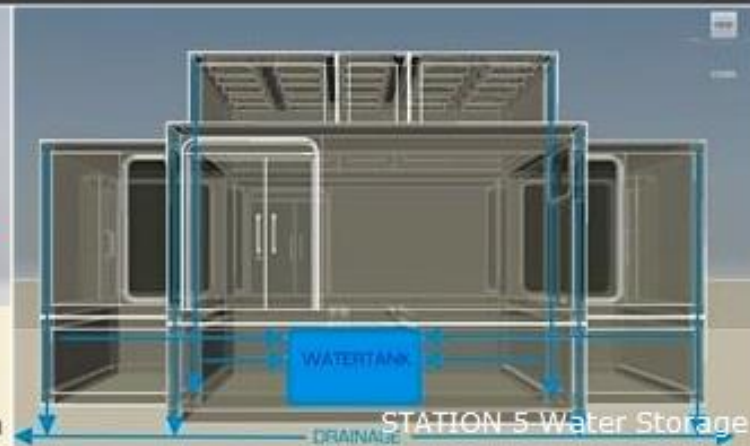




STATION 5 Passive Climatisation



STATION 5 Passive Climatisation



STATION 5 Water Storage



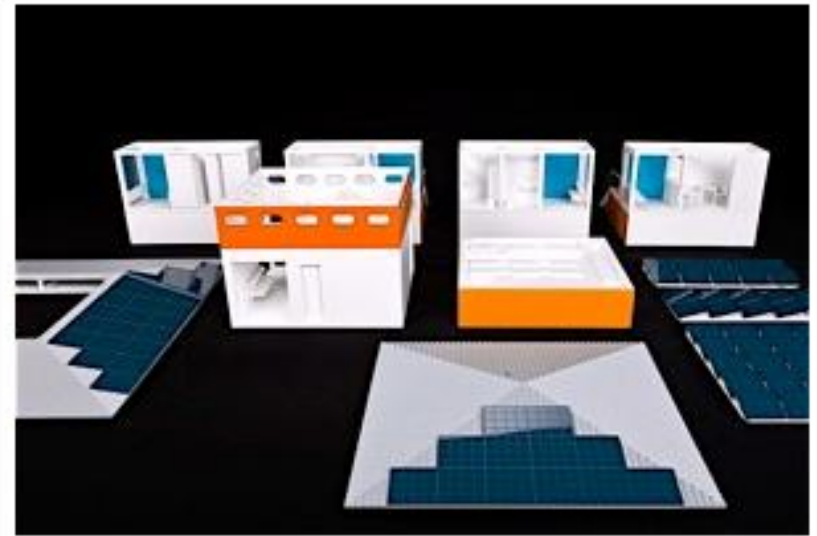
STATION 5 Modular School with Passive Climatisation



STATION 5 Modular First Aid Unit / Rescue Station













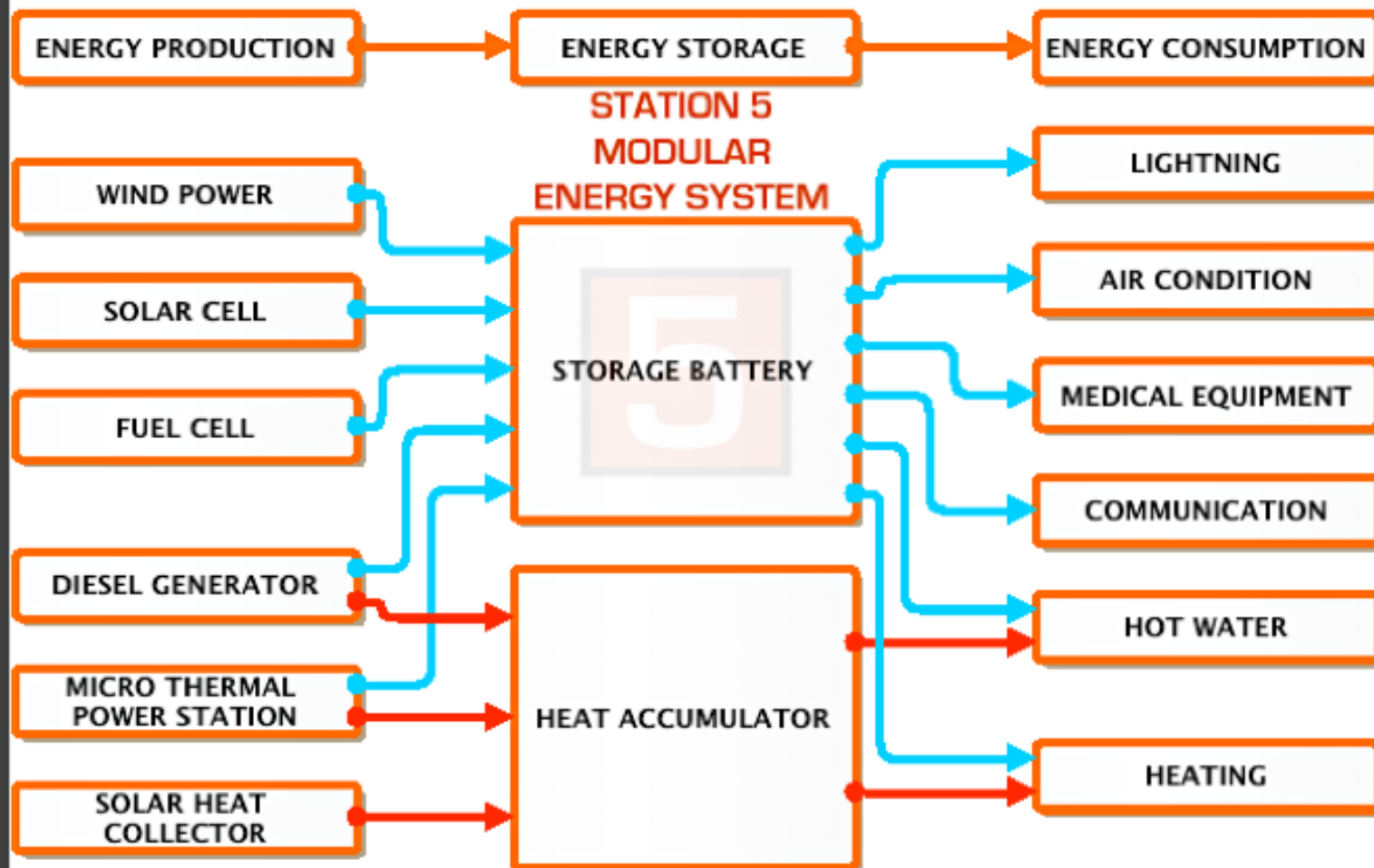
STATION 5 Modular Energy System



USE ENERGY EFFICIENTLY



STATION 5



THE TYPE OF ENERGY GENERATION IS DETERMINED BY THE OPERATIONAL AREA





STATION 5 Modular First Aid Unit / Rescue Station

## ► modular first aid unit

further information

**STATION 5** offers **first aid units / rescue stations**.

85 sqm included:

- + DOCTORS ROOM
- + TREATMENT ROOM
- + LABORATORY
- + RECEPTION / DISPENSARY SERVICE
- + STAFF ROOM
- + STORAGE
- + TOILETS / BATHROOM
- + TECHNICAL ROOM / WASTE ROOM
- + WAITING AREA / CORRIDOR





STATION 5 Modular Clinic System

B L O C

## ► *modular clinic*

further information

**STATION 5** offers **modular clinic units** from a single **doctor's practice** up to a large **hospital complex**. That includes **all medical facilities**, e.g. operating theatre, emergency room, treatment rooms, laboratories, patient wards, as well as service modules, e.g. kitchen, storage, reception. The fine adjustment of the ground plans will always be adapted to the needs of the customer and to the variety of units. We have standardized floor plans for our Modular Medical Units that are planned with regard to the **medical workflow**. This way the personnel can **optimize** their work and be **efficient**. Therefore personnel cost will be reduced and the time for patients will grow. Below we show an **example** of a one-unit **doctor's practice** equivalent to 83sqm effective area. Only one nurse and a doctor due to the internal connections of the rooms can operate the **doctor's practice**.

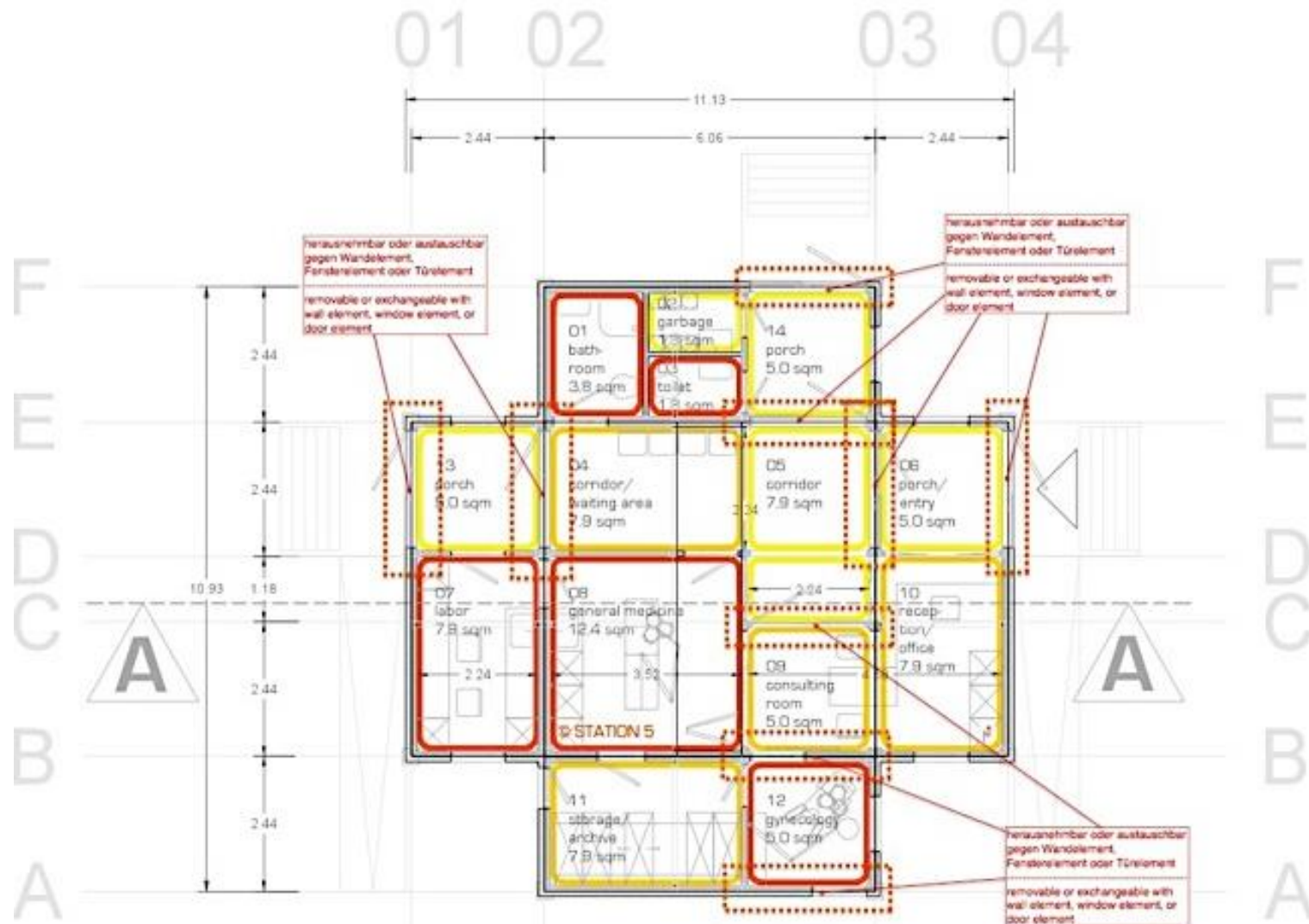




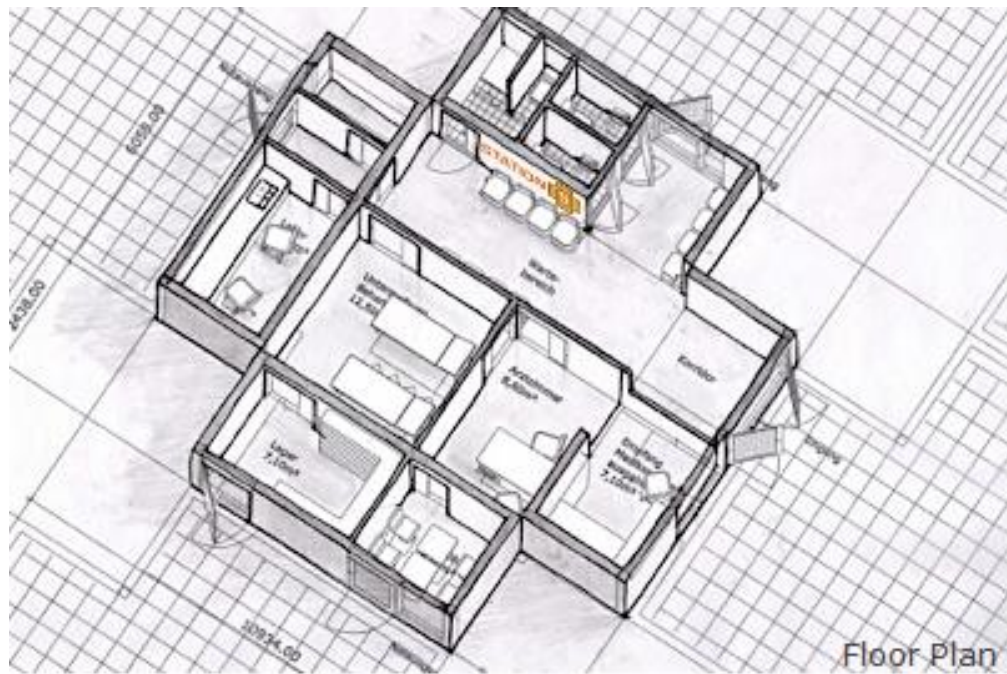
# SINGLE UNIT DOCTOR'S PRACTICE

gross floor area: 96 sqm

effective area: 84 sqm







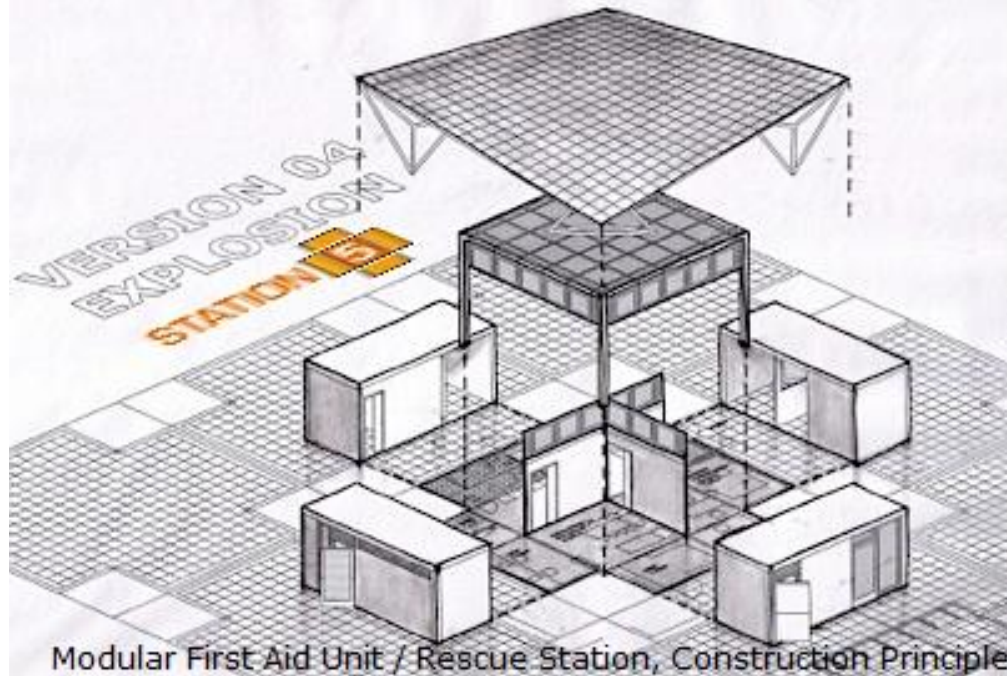
Floor Plan



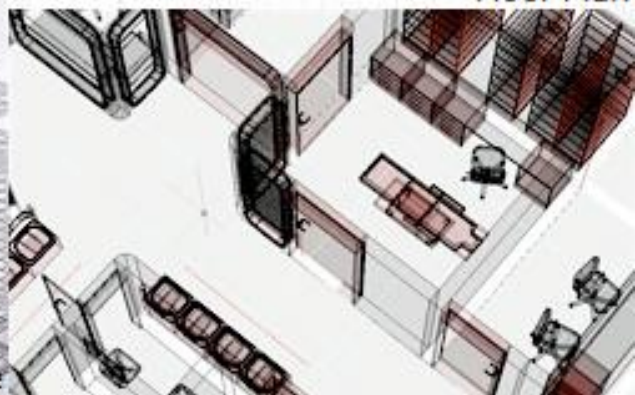
STATION 5 Operating Theater



Floor Plan



Modular First Aid Unit / Rescue Station, Construction Principle









STATION 5 Modular Clinic System, Example Floor Plan





## ► *low cost house*

further information

The **modular low cost houses** can be built in various designs. The basis are two modules. Module A is one single room; Module B has a separate room, which is used, as a bathroom. It is possible to **choose** any of the Module types and also of the roof shapes in the desired configuration. The roof types are monopitch roofs or saddle roofs.

**Economy Houses** types and some Standard House Types can be even combined to semi-detached housing and other complex structures, whereas Premium House Types are of more individual character. There are almost no limits to **configurations** and **individual** wishes in this category. In all categories **STATION 5** is customized.

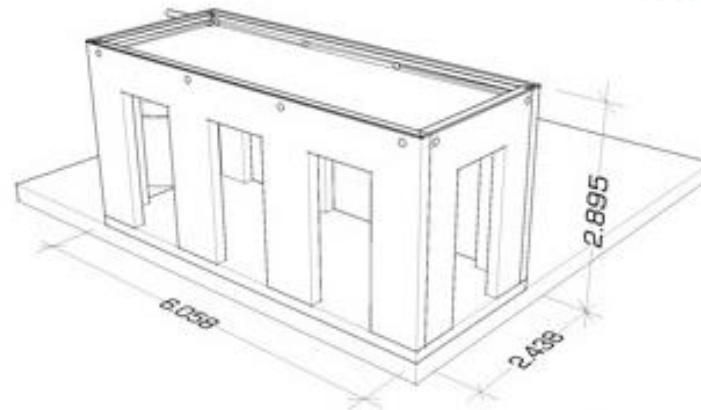
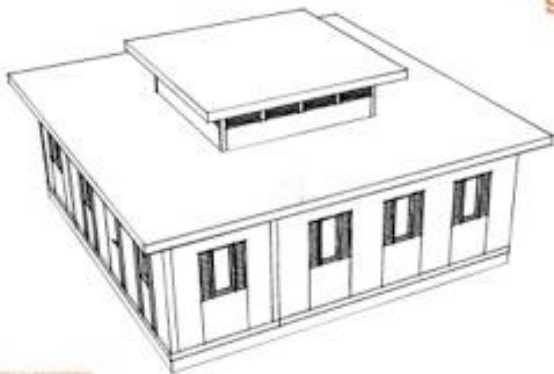






STATION 5 Modular Low Cost House, Semi Detached





STATION 5

STATION 5

STATION 5 Modular Low Cost House

B L O C



*modular building system*

STATION

5

B L O C



STATION 5

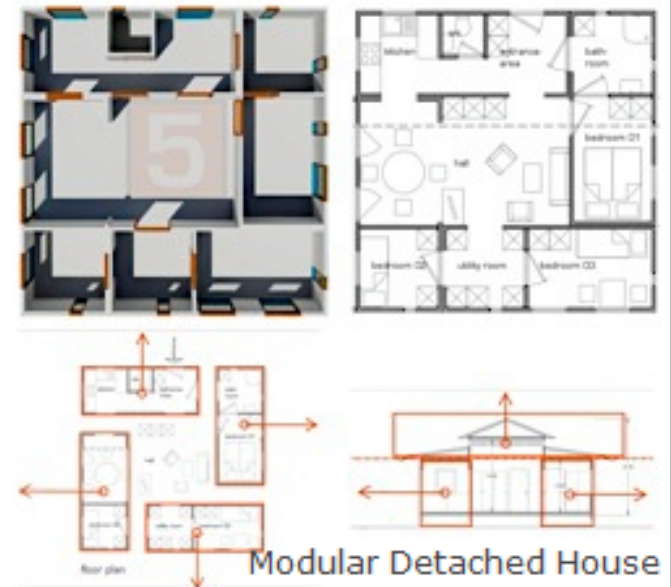
STATION 5 Modular Detached House



## ► modular house

further information

The **Modular Detached House** have a lot of innovations for the **Wordwide Operation**, in all climatic zones, especially for areas without or less infrastructure based on a unique, modular, very flexible, combinable and robust construction principle. **STATION 5** houses are **resistant** against all bugs and insects, water, mould and mildew and fire. The construction construed for a long lasting operation. The above-mentioned types of **Modular Detached House** are **combinable** with other **STATION 5** Products, such as **Medical Centers, Schools, and Shops** and so on up to the creation of infrastructures. **STATION 5** supports the idea of using regenerative energy to protect the environment and to **save costs**. Therefore **STATION 5** houses are very energy efficient, require zero maintenance, use no chemicals in the production process, and use the standardized transport modus for their products. The prefabricated elements of the units guarantee a **fast and easy set up** on location.



## ► modular house



STATION 5 Modular Detached House



Modular Detached House, Example Floor Plan



STATION 5 Modular Detached House



STATION 5 Modular Detached House, Views



B L O C

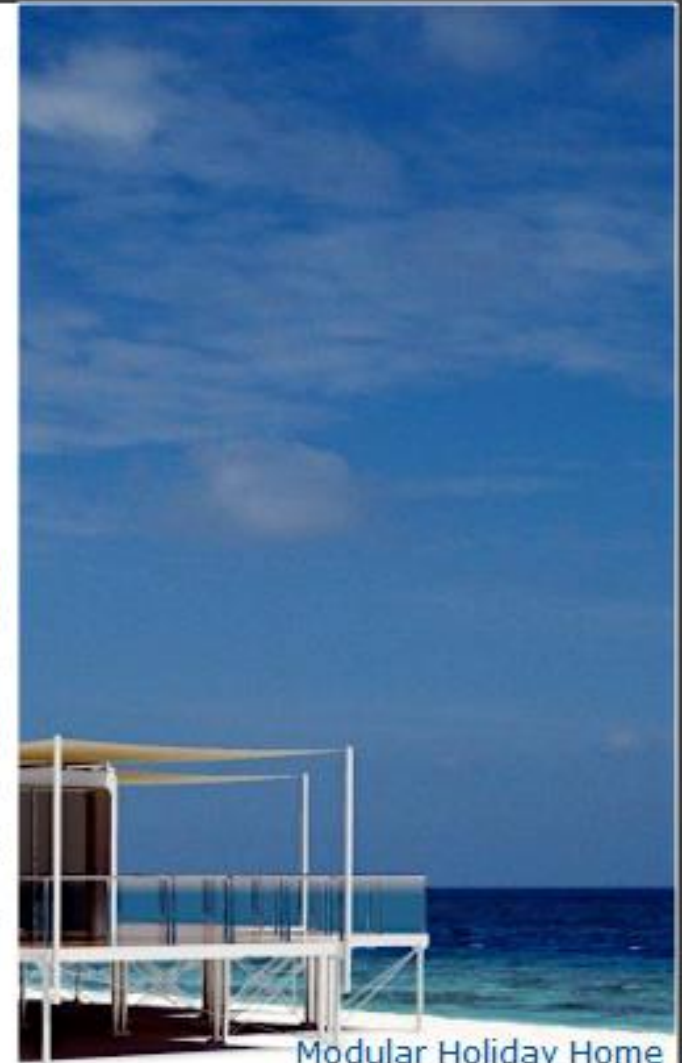


STATION 5 Modular Holiday Home „Bay Watch“

**STATION 5** builds your **holiday home** or **guesthouse** on basis of our modular, flexible and ultra- modern system. Starting up with one unit of 83sqm shown here, further units can be docked on each side during operation and build up to a customized solution. We offer you

- + **SINGLE PAVILIONS, HOLIDAY HOME**
- + **CLUSTERS,**
- + **ALL KINDS OF GUEST ROOMS,**
- + **WELLNESS AREAS,**
- + **SERVICE AREAS**

The **Modular Hotel Units** are made for **worldwide** use in all climatic zones under extreme conditions. Our Modular Hotel Units are build up in a so called semi permanent construction construed for a long lasting operation, but moveable within a short time. The **STATION 5** units use standardized transports by land, by sea, by air and can be fast and easy set up on location. The units can also be operated in areas with fewer infrastructure based on a unique, modular, very flexible, combinable and robust construction principle. The Pavillons will be designed very close with the **customer's wishes**. Each Pavillon is a unique design.



Modular Holiday Home









*modular building system*

STATION

5

B L O C



STATION 5 Modular School

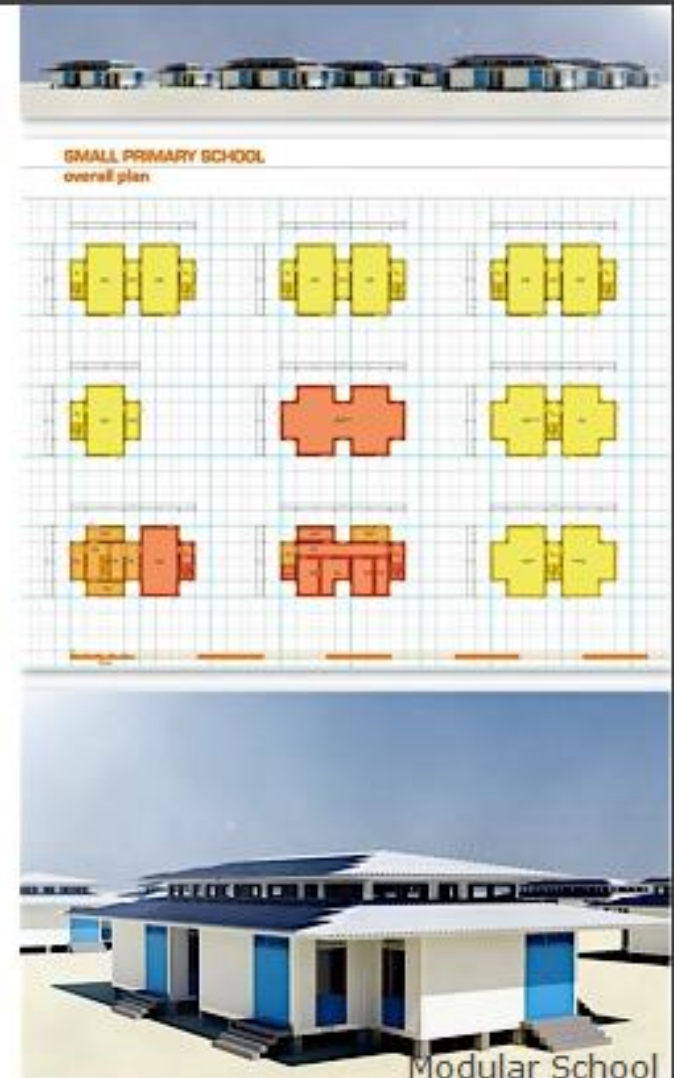
## ► modular school

further information

**STATION 5** builds your **school** on basis of our modular, flexible and ultra modern system. Starting up with one unit of 83sqm. Further units can be docked on each side during operation and build up to a customized solution. We offer you:

- + CLASSROOMS,
- + FACULTY ROOMS,
- + SPORTS HALLS,
- + SANITARY FACILITIES, + SERVICE AREAS,
- + ACCOMMODATIONS

The **Modular School Units** are made for **worldwide** use in all climatic zones under extreme conditions. The units can also be operated in areas with fewer infrastructure based on a unique, modular, very flexible, combinable and robust construction principle. Of course our Modular School Units are **earthquake proof** and build up in a so called semi permanent construction construed for a long lasting operation, but **moveable** within a short time. The **STATION 5** units use standardized transports by land, by sea, by air and can be fast and easy set up on location.

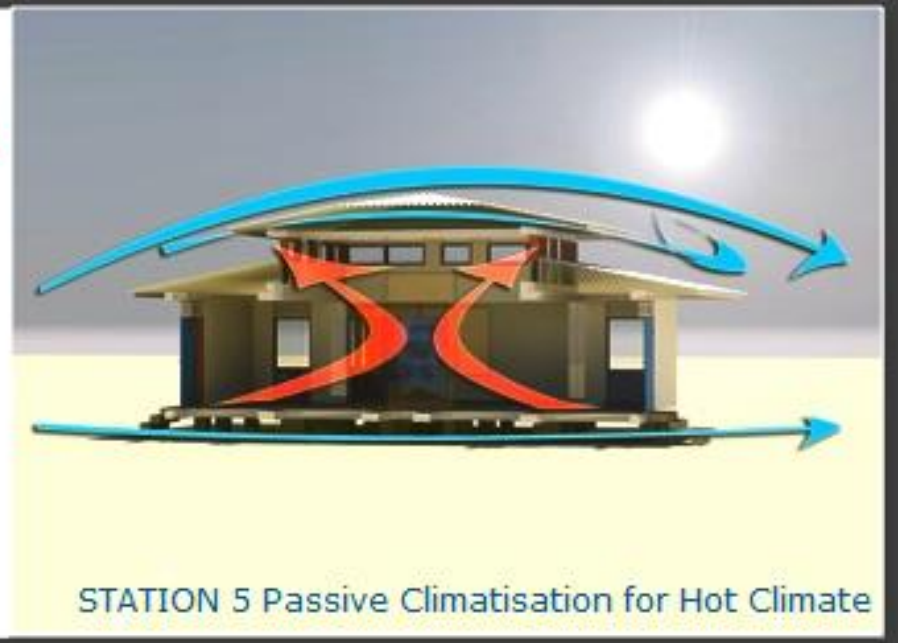
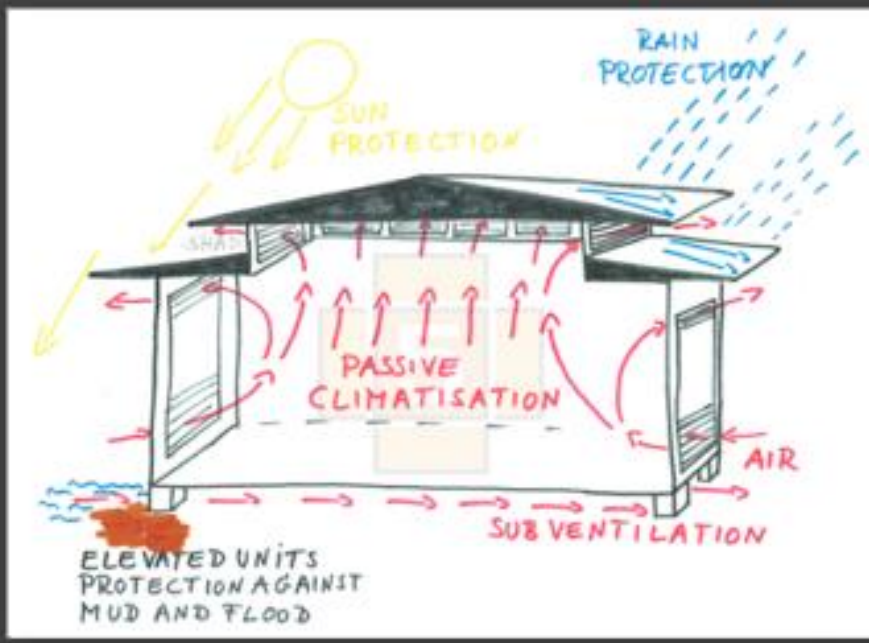




## ► modular school









Modular School, Examples Interior





STATION 5 Modular School, Views



# SMALL PRIMARY SCHOOL

## overall plan

### STATION 5



© 2010 BLOC, all rights reserved.  
This document is the property of BLOC. It is not to be reproduced, stored in a retrieval system, or transmitted in any form or by any means, electronic, mechanical, photocopying, recording, or by any information storage and retrieval system, without prior written permission from BLOC.

SCALE: 1:100

gross floor area: 1510.2 sqm

effective area: 1402.6 sqm

#### OPTIONAL EXTRA CHARGE

- duty and any other local fee
- solar panels and converters
- roofed external walkway
- sports fields
- all ground work
- foundation
- fences
- external staircase
- ventilation slots
- air condition
- sewerage
- furniture
- sanitary equipment
- intercom systems
- computer cables
- TV-cabling

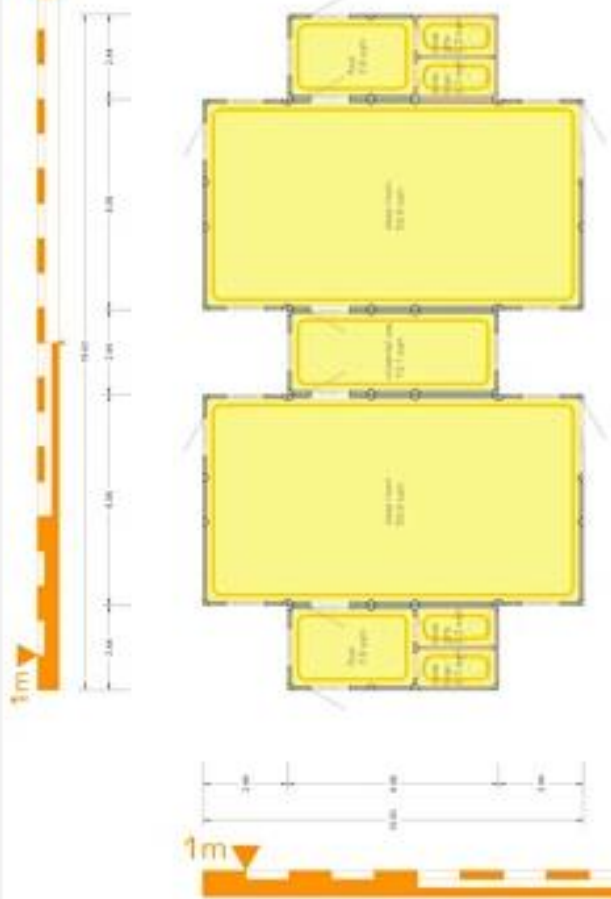
education spaces  
education supporting spaces  
administrative spaces



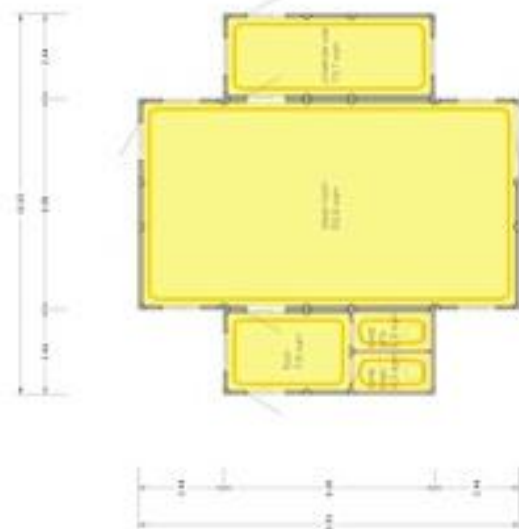
STATION 5 Modular School, Examples, Floor Plan

## SMALL PRIMARY SCHOOL

unit class room



unit class room



STATION 5



© 2010 by BLOC. All rights reserved.  
This plan is for informational purposes only.  
It is not intended to be used as a construction document.  
It is not intended to be used as a construction document.

SCALE 1:40

### OPTIONAL EXTRA CHARGE:

- duty and any other local fee
- solar panels and converters
- roofed external walkway
- sports fields
- all ground work
- foundation
- fences
- external staircase
- ventilation slots
- air condition
- sewerage
- furniture
- sanitary equipment
- intercom systems
- computer cables
- TV-cabling

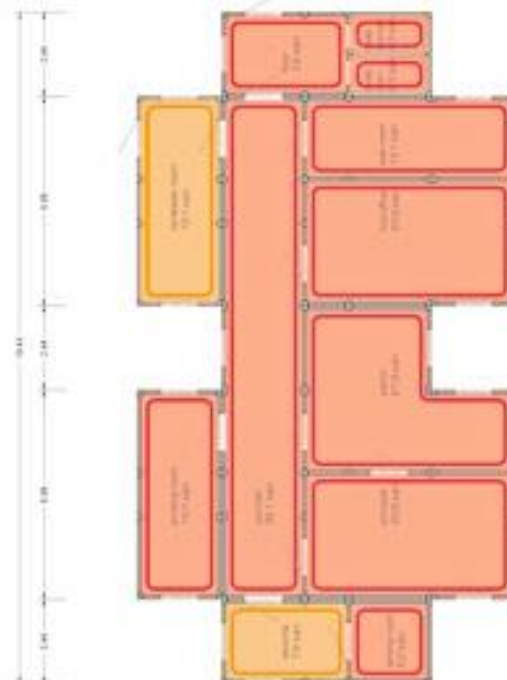
STATION 5 Modular School, Examples, Floor Plan

## SMALL PRIMARY SCHOOL

### unit kitchen / staff



### unit administration



### STATION 5



STATION 5 is a modular school unit designed to be used as a temporary or permanent school unit. It is a modular school unit designed to be used as a temporary or permanent school unit.

SCALE 1:40

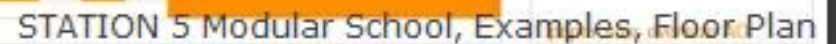
#### OPTIONAL EXTRA CHARGE:

- duty and any other local fee
- solar panels and converters
- roofed external walkway
- sports fields
- all ground work
- foundation
- fences
- external staircase
- ventilation slots
- air condition
- sewerage
- furniture
- sanitary equipment
- alarm systems
- computer cables
- TV-cabling

STATION 5 Modular School, Examples, Floor Plan



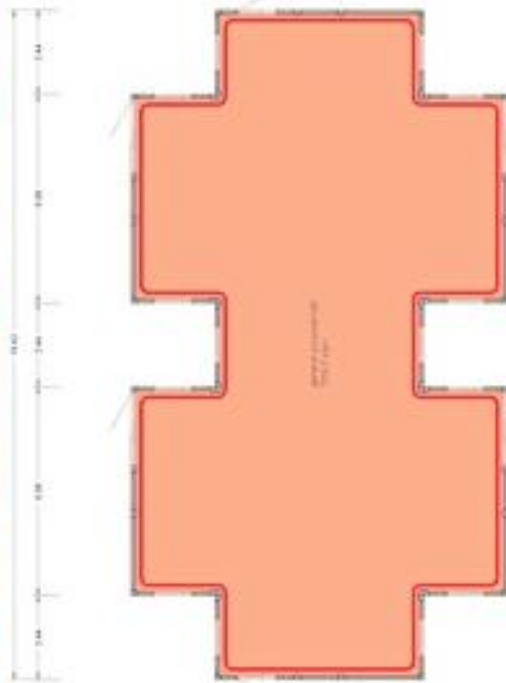
unit since laboratory / multimedia centre



- duty and any other local fee
- solar panels and converters
- roofed external walkway
- sports fields
- all ground work
- foundation
- fences
- external staircases
- ventilation slots
- air condition
- sewerage
- furniture
- sanitary equipment
- intercom systems
- computer cables
- TV-cabling

## SMALL PRIMARY SCHOOL

unit general purpose hall



unit multi purpose / grade R



### STATION 5



Compass rose showing cardinal and ordinal directions. North arrow points towards the top of the page.

SCALE 1:40

#### OPTIONAL EXTRA CHARGE:

- duty and any other local fee
- solar panels and converters
- roofed external walkway
- sports fields
- all ground work
- foundation
- fences
- external staircase
- ventilation slots
- air condition
- sewerage
- furniture
- sanitary equipment
- intercom systems
- computer cables
- TV-cabling

STATION 5 Modular School, Examples, Floor Plan

## SMALL PRIMARY SCHOOL

views



### STATION 5



© 2010 BLOC, all rights reserved.  
Designed and built by BLOC, a leading provider  
of modular school units and other modular  
building solutions.

#### OPTIONAL EXTRA CHARGE

- duty and any other local fee
- solar panels and converters
- roofed external walkway
- sports fields
- all ground work
- foundation
- fences
- external staircases
- ventilation shafts
- air condition
- sewerage
- furniture
- sanitary equipment
- intercom systems
- computer cables
- TV-cabling

STATION 5 Modular School, Views



## ► sky bar

further information

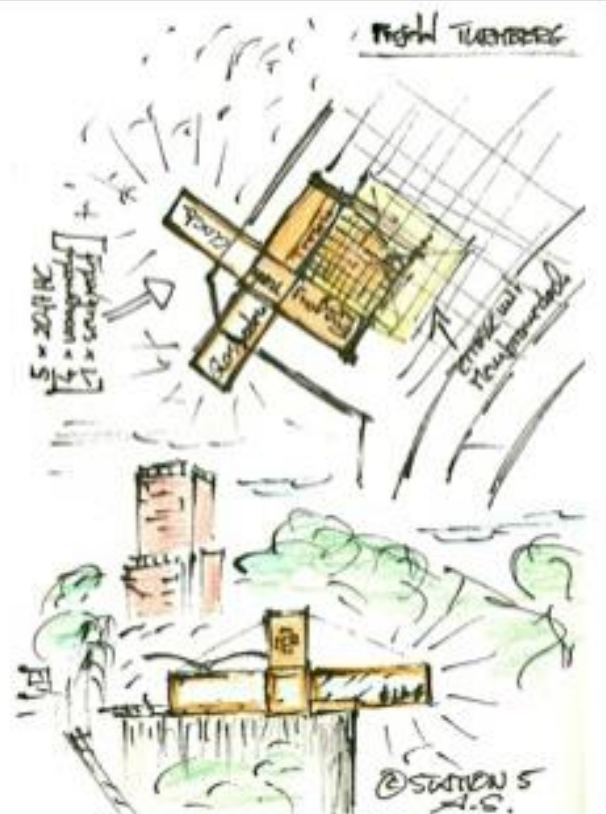
Four room elements with the measures of 20" HC containers arrange each other in a cross-shaped way to create a fifth squared-shaped part. This fifth vertical part refers to the tower and holds in a static sense the two **overhanging glass platforms**. The other two room elements accommodate the kiosk, two WCs and a handicapped accessible WC. The wooden plank terrace in front of the kiosk invites you to linger and protects the visitors from sun and rain through a retractable membrane roof. Glass strips in the roof provide the inside with natural daylights and create a pleasant room ambience. The two overhanging viewing platforms are for people with cool heads! The floor and all sites are completely made of glass. The visitors hover above the city and **enjoy the view** in all directions.



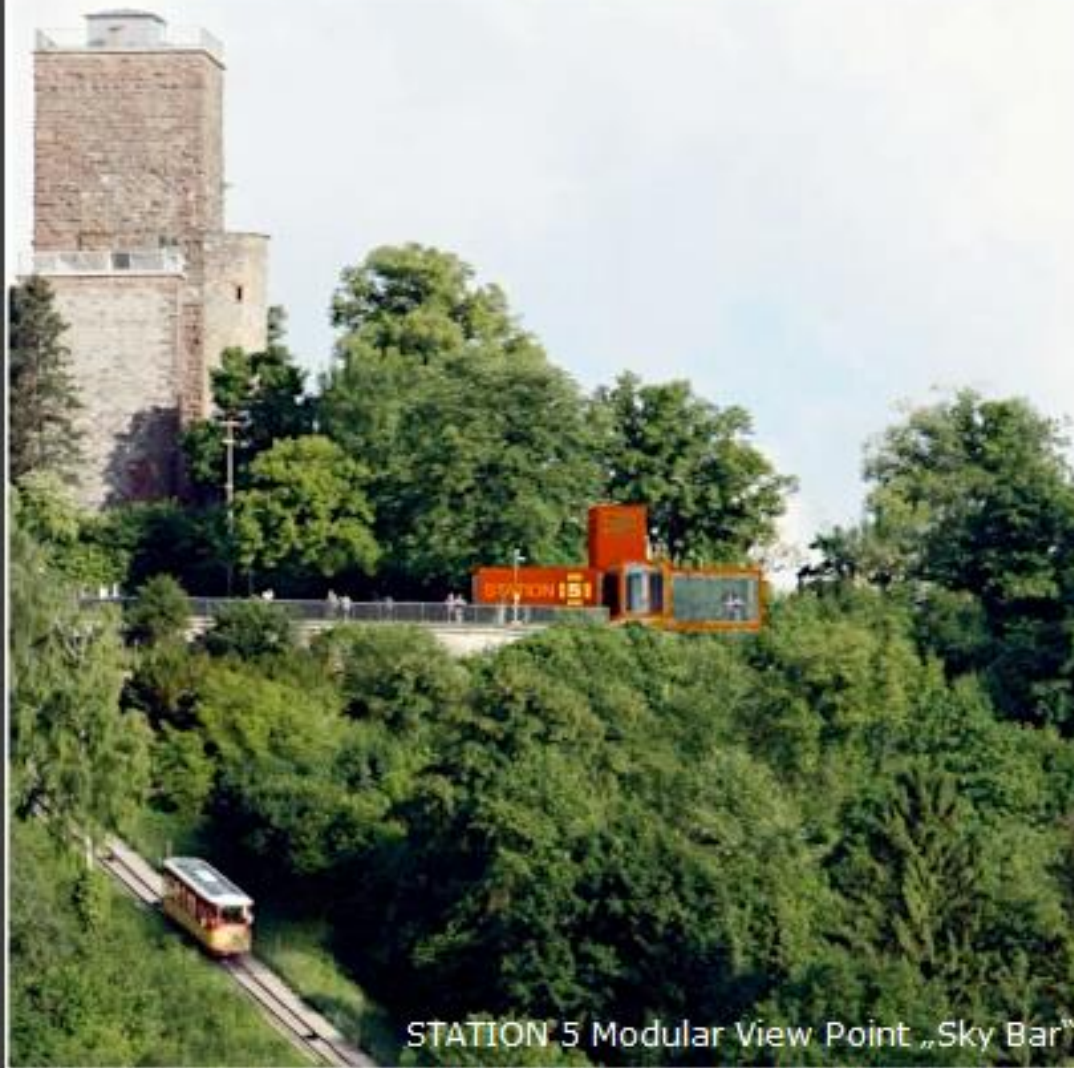
Modular View Point Station „Sky Bar“



## ► sky bar

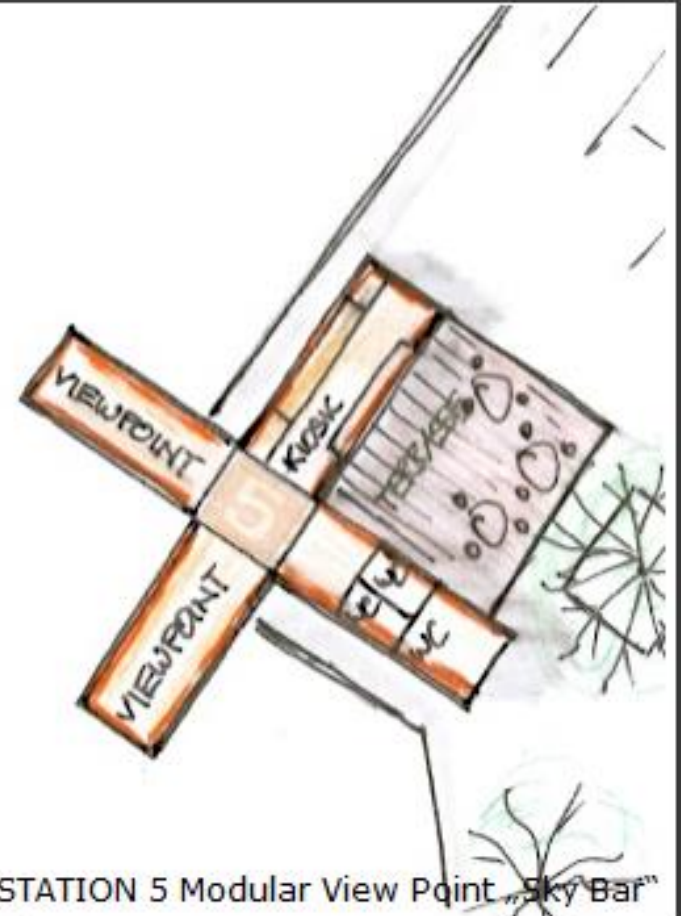
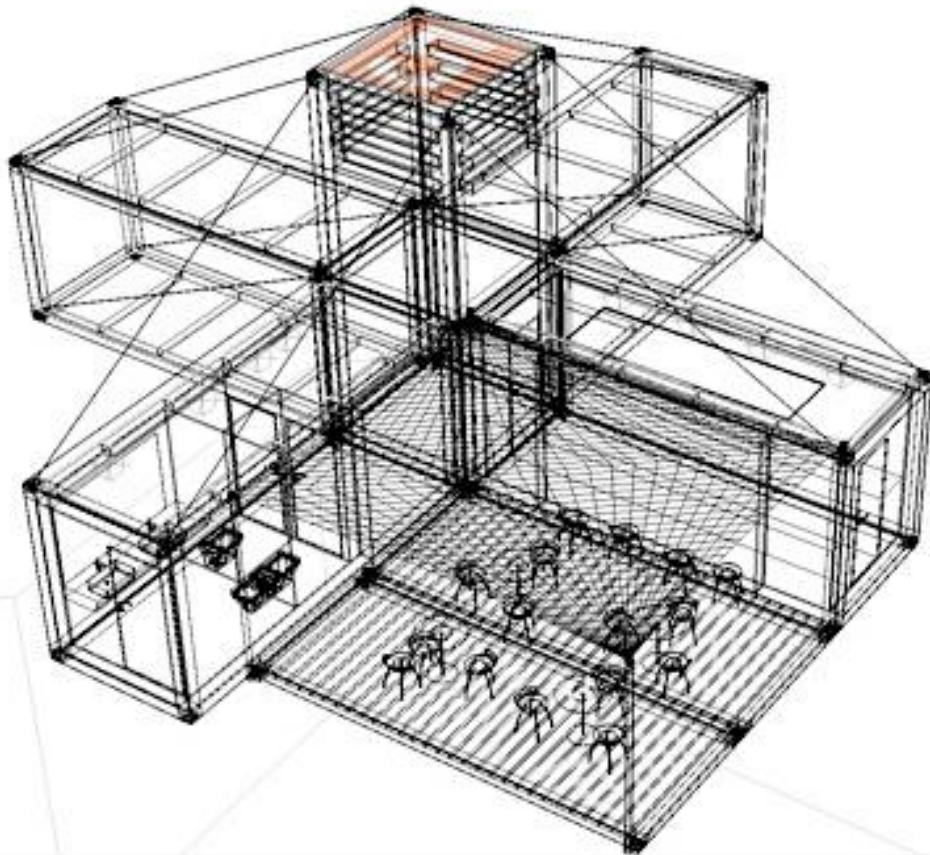






STATION 5 Modular View Point „Sky Bar“

Four room elements with the measures of 20" HC containers arrange each other in a cross-shaped way to create a fifth squared-shaped part. This fifth vertical part refers to the tower and holds in a static sense the two overhanging glass platforms. The other two room elements accommodate the kiosk, two WCs and a handicapped accessible WC. The wooden plank terrace in front of the kiosk invites you to linger and protects the visitors from sun and rain through a retractable membrane roof. Glass strips in the roof provide the inside with natural daylight and create a pleasant room ambience. The two overhanging viewing platforms are for people with cool heads! The floor and all sites are completely made of glass. The visitors hover above the city and enjoy the view in all directions.



STATION 5 Modular View Point „Sky Bar“

Contact Us At:

U.S. Tele.: 512 596 1855

P.O. Box 90661

Austin, Texas 78709 USA

[WWW.BLOCCOS.COM](http://WWW.BLOCCOS.COM)

[station5@bloccos.com](mailto:station5@bloccos.com)